

# *Have Coffee with Me*



***“Let us stir up one another”***  
***He-brews 10:24***

**The First Church of Monson, Congregational  
United Church of Christ  
An Open and Affirming Church  
Fourth Sunday in Lent  
Sunday, March 30, 2025**

*Whoever you are, wherever you are on life’s journey,  
**you** are welcome here!*

# All Are Welcome

C<sup>7</sup> F C F B<sup>b</sup> C Dm F C

1. Let us build a house where love can dwell And all can safe - ly live, A  
 build a house where love is found In wa - ter, wine and wheat: A  
 build a house where all are named, Their songs and vi - sions heard And

F Dm<sup>7</sup> Gm C Gm C<sup>7</sup> B<sup>b</sup> F Am Dm

place where saints and chil - dren tell How hearts learn to for - give. Built of hopes and dreams and  
 ban - quet hall on ho - ly ground, Where peace and jus - tice meet. Here the love of God, through  
 loved and treas - ured, taught and claimed As words with - in the Word. Built of tears and cries and

Gm C F B<sup>b</sup> F B<sup>b</sup> A<sup>7</sup> Dm

vi - sions, Rock of faith and vault of grace; Here the love of Christ shall end di - vi - sions:  
 Je - sus, Is re - vealed in time and space; As we share in Christ the feast that frees us:  
 laugh - ter, Prayers of faith and songs of grace; Let this house pro - claim from floor to raft - er:

Gm Dm Am Gm F Gm C F B<sup>b</sup> F C<sup>7</sup>

All are wel - come, all are wel - come, all are wel - come in this place. Let us

**First Church of Monson, Congregational  
United Church of Christ  
An Open and Affirming Church  
Fourth Sunday in Lent  
March 30, 2025**

**Praise and Worship**

**Welcome**

Rev. Dr. Holly Norwick

**Passing of the Lord's Peace**

**A Time for Children**

Rev. Dr. Holly Norwick

**Prelude**

*All Are Welcome*

- Lynn Trapp (b. 1963)

**Introit**

**\*Call to Worship (Sing)**

Rev: God of all, we come before You this day, in need of Your love.

**All: *What a friend we have in Jesus,***

Rev: God of all, we come before You this day, in need of Your presence.

**All: *all our sins and griefs to bear!***

Rev: God of all, we come before You this day, in need of Your comfort.

**All: *What a privilege to carry,***

Rev: God of all, we come before You this day, in need of Your strength.

**All: *everything to God in prayer.***

Rev: God of all, we come before You this day, in need of Your peace.

**All: *Oh, what peace we often forfeit, oh what needless pain we bear.***

Rev: God of all, we come before You this day, in need of Your healing.

**All: *All because we do not carry***

Rev: God of all, we come before You this day, in need of Your grace.

**All: *Everything to God in prayer!***

### **\*Gloria Patri**

***Glory be to the Father, and to the Son, and to the Holy Ghost. As it was in the beginning, is now, and ever shall be, world without end. Amen! Amen!***

### **\*Unison Prayer**

***O God, One who has perfected how to be in a relationship, grant us patience with one another. In the fret and jar that life can sometimes be, remind us that each of us fight a hard fight, and walk a lonely road, at times. Forgive us, Lord, if we hurt our fellow souls; teach us a gentler tone, a sweeter charity of words, and a more healing touch. Show us how to take hold of Your hand and reaching for one another to complete the circle of love and trust that You instilled into our very creation. We thank You for the cloud of witnesses that surround us, and strive to be there for one another in every way. In Your name we pray. Amen.***

### **\*Opening Hymn**

*All Are Welcome*

(Page 1)

\*Those who are able are invited to stand.

## **First Scripture Reading**      Hebrews 10: 19-25

*I would be remiss to point out that our coffee-themed Sunday is supported by our first scripture reading from He – BREWS and we are directed to “stir one another up.”*

Therefore, brothers and sisters, since we have confidence to enter the Most Holy Place by the blood of Jesus, by a new and living way opened for us through the curtain, that is, his body, and since we have a great priest over the house of God, let us draw near to God with a sincere heart and with the full assurance that faith brings, having our hearts sprinkled to cleanse us from a guilty conscience and having our bodies washed with pure water. Let us hold unswervingly to the hope we profess, for those who promised are faithful. And let us consider ***how we may stir one up*** toward love and good deeds, not giving up meeting together, as some are in the habit of doing, but encouraging one another—and all the more as you see the Day approaching.

## **Second Scripture Reading**    1 Corinthians 12: 12-14, 25-27

Just as a body, though one, has many parts, but all its many parts form one body, so it is with Christ. For we were all baptized by one Spirit so as to form one body—whether Jews or Gentiles, slave or free—and we were all given the one Spirit to drink. Even so the body is not made up of one part but of many.

Now if the foot should say, “Because I am not a hand, I do not belong to the body,” it would not for that reason stop being part of the body. And if the ear should say, “Because I am not an eye, I do not belong to the body,” it would not for that reason stop being part of the body. If the whole body were an eye, where would the sense of hearing be? If the whole body were an ear, where would the sense of smell be? But in fact God has placed the parts in the body, every one of them, just as he wanted them

to be. If they were all one part, where would the body be? As it is, there are many parts, but one body.

The eye cannot say to the hand, “I don’t need you!” And the head cannot say to the feet, “I don’t need you!” so that there should be no division in the body, but that its parts should have equal concern for each other. If one part suffers, every part suffers with it; if one part is honored, every part rejoices with it. Now you are the body of Christ, and each one of you is a part of it.

**\*Hymn** *One Bread, One Body* (Page 7)

**Sermon** “*You Can Start By Buying Me a Cup of Coffee*”  
Rev. Dr. Holly Norwick

**Choral Anthem** *Beyond the Days* - R. Manalo (b. 1932)

**Prayers of the People** (*Joys and Concerns*)

**Pastoral Prayer** Rev. Dr. Holly Norwick

**The Lord’s Prayer** (you are invited to say these, or whichever words, are meaningful for you)

***Our Father, Who art in heaven, hallowed be thy name. Thy kingdom come, Thy will be done; on earth as it is in heaven. Give us this day our daily bread, and forgive us our trespasses, as we forgive those who trespass against us. And lead us not into temptation, but deliver us from evil. For Thine is the kingdom and the power and the glory, forever and ever; Amen.***

**\*Hymn** *The Jesus Song* (Page 8)

**Call to Offering** Rev. Dr. Holly Norwick



Scan Here to Give Online

**\*Doxology**

*Praise God, from whom all blessings flow;  
Praise Him, all creatures here below;  
Praise Him above, ye heavenly host;  
Praise Father, Son, and Holy Ghost. Amen.*

**\*Prayer of Dedication**

Rev. Dr. Holly Norwick

**\*Closing Hymn**      *What a Friend We Have in Jesus*      (Page 9)

**\*Benediction**

**\*Departing Together**      *Blest Be the Tie That Binds*

*Blest be the tie that binds our hearts in Christian love.  
The fellowship of kindred minds is like to that above. Amen.*

**Postlude**

*Lenten Melody*

- Gilbert Martin

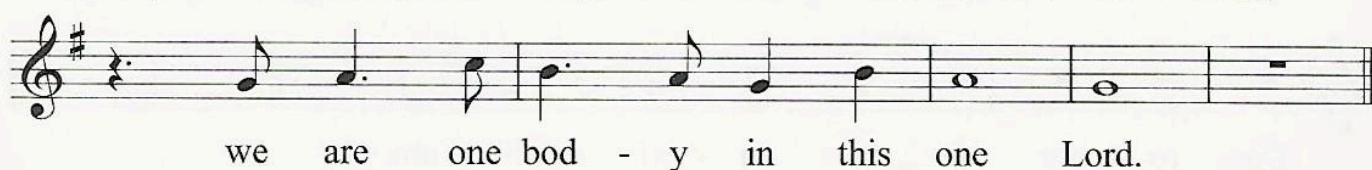
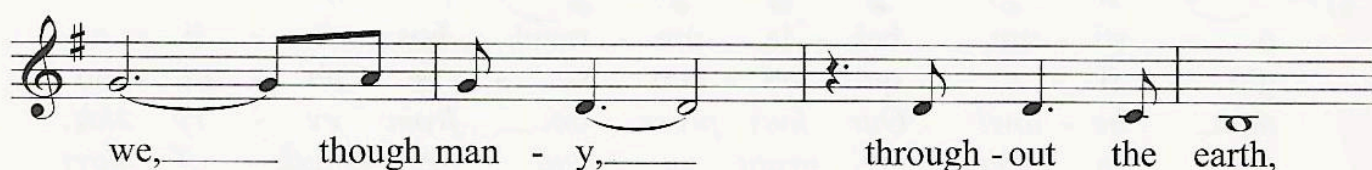
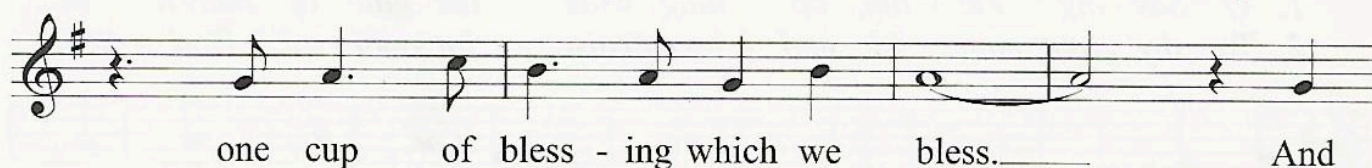
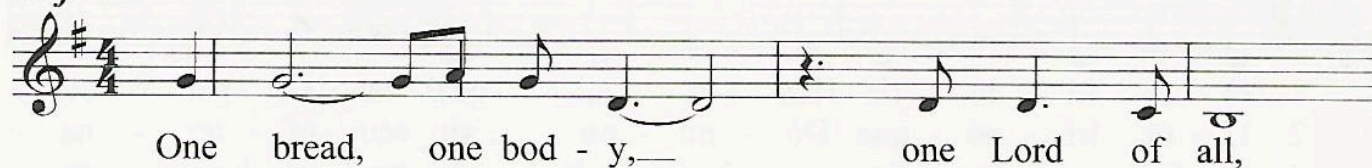
**Lent - Purple**

Purple represents royalty and suffering. In the context of Lent, it symbolizes penance, sacrifice, and preparation.

# One Bread, One Body

161

## Refrain



- |               |             |              |            |
|---------------|-------------|--------------|------------|
| 1. Gen - tile | or Jew,     | ser - vant   | or free,   |
| 2. Man - y    | the gifts,  | man - y      | the works, |
| 3. Grain for  | the fields, | scat - tered | and grown, |



wom - an	or	man, —	no	more.
one	in	the Lord —	of	all.
gath - ered	to	one, —	for	all.

*Text and Music: John B. Foley, S.J. © 1978, John B. Foley, S.J. and OCP Publications, 5536 NE Hassalo, Portland, OR 97213. All rights reserved. Used with permission.*



# The Jesus Song

(sing twice)

Lord, Je-sus Christ, Son of God, have mer-cy on\_ me, have  
mer-cy on\_ me. Lord, Je-sus Christ, Son of God, have  
mer cy\_ on me, have mer-cy on\_ me. A men.

The first section of the song is written in treble clef with a key signature of one sharp (F#) and a 3/4 time signature. It consists of three staves of music. The lyrics are: "Lord, Je-sus Christ, Son of God, have mer-cy on\_ me, have mer-cy on\_ me. Lord, Je-sus Christ, Son of God, have mer cy\_ on me, have mer-cy on\_ me. A men." The music features a mix of quarter and eighth notes, with some rests. The first staff ends with a repeat sign, and the third staff ends with a double bar line and repeat dots.

(sing twice and then repeat Lord Jesus section one more time)

Je - sus, I trust in you. Je - sus, I trust in you.  
You are the son of the Liv - ing God. Je - sus,  
I trust in you. Je - sus, I trust in you.

The second section of the song is written in treble clef with a key signature of one sharp (F#) and a 3/4 time signature. It consists of three staves of music. The lyrics are: "Je - sus, I trust in you. Je - sus, I trust in you. You are the son of the Liv - ing God. Je - sus, I trust in you. Je - sus, I trust in you." The music features a mix of quarter and eighth notes, with some rests. The first staff ends with a repeat sign, and the third staff ends with a double bar line and repeat dots.

# What a Friend We Have in Jesus

506

Joseph Scriven, 1855; alt.

Phil. 4:6-7



1 What a friend we have in Je - sus, all our sins and griefs to bear!  
 2 Have we tri - als and temp - ta - tions? Is there trou-ble an - y - where?  
 3 Are we weak and heav - y lad - en, bur-dened with a load of care?



What a priv-i - lege to car - ry ev - ery-thing to God in prayer!  
 We should nev - er be dis - cour - aged; take it to our God in prayer!  
 Pre - cious Sav-ior, still our ref - uge, take it to our God in prayer!



Oh, what peace we of - ten for - feit, oh, what need-less pain we bear,  
 Can we find a friend so faith - ful, who will all our sor-rows share?  
 Do your friends de-spise, for - sake you? Take it to our God in prayer!



All be-cause we do not car - ry ev - ery-thing to God in prayer.  
 Je - sus knows our ev - ery weak - ness; take it to our God in prayer!  
 Je - sus' arms will take and shield you; you will find a sol-ace there.

*No stranger to sorrow himself, Joseph Scriven wrote this hymn to comfort his mother in Ireland. Scriven, who moved to Canada as a young man, attempted to follow literally the teachings of the Sermon on the Mount.*

Tune: ERIE 8.7.8.7.D.  
 Charles C. Converse, 1868

## **Serving You Today**

### *Worship Leaders:*

Ministers of the Congregation	All Members of First Church
Pastor	Rev. Dr. Holly Norwick
Director of Music Ministries	Kiel Krommer
Ushers/Greeters	Donna Okscin/Janice Muldrew
Fellowship	Music Committee
Lay Reader	Deb Shepard

### *Officers:*

Moderator	Cindy DeSellier
Clerk	Carol Mullen
Treasurer	Suzanne Kelley
Chair, Board of Deacons	Jeanne Dill
Chair, Board of Trustees	Suzanne Kelley

### *Members at Large:*

Lynn Galica  
Elaine Harris  
Mary Newland

### *Staff:*

Church Administrator	Lee Brahen
Sunday School Superintendent	Erin Greene Wallace
Custodian	Linda Whippie

## **Office Hours, Pastoral Care, and Contact Information**

### ***Church Office Hours***

The church office is open Tuesday and Thursday from 9:00 a.m. to 12:00 p.m. You can always leave a message on the church answering machine at 413-267-3312 when the office is not staffed, or contact the office by email at [office@firstchurchmonson.org](mailto:office@firstchurchmonson.org).

### ***Pastor's Hours***

Monday 8:30 - 4:30 *remotely*, and

Tuesday - Thursday from 8:30 - 4:30 *in-office*.

If you are unable to meet during any of those hours, Pastor Holly is happy to meet outside those times by appointment, and can be reached by email at [pastor@firstchurchmonson.org](mailto:pastor@firstchurchmonson.org), or by phone at (808) 371-4701.

For urgent matters, please contact her at any time by calling (808) 371-4701.

## IN OUR LOVE AND PRAYERS

***Please complete a Prayer Request Form and place it in the offering plate if you wish to include a name in next Sunday's bulletin. Your loved one will remain on the prayer list for one month, after which you may resubmit a request if necessary.***

For healing and support:

Carol Snyder

Chris

Martha Warren

Mary Linkenhoker

Ginny

Joanne

Richard D'Aquila

Marlaina

Josh Cash

Joseph B.

Rudy Pyne

For comfort in grief:

The Family of Philip Wallander

The Family and Friends of Barry Muldrew

Deb Laviolette and family

For strength and comfort during war and disaster:

The people of Ukraine

The people of Israel and Gaza

The people of Palestine and Lebanon

The people of Syria

The people affected by the California wildfires

For all service people, wherever they may be:

Chelsea Carr

Malik Pugh, USMC

Michael Wales, USN

Stephen Dill, USN

Tim Olson, USN

## **This Week in the Life of the Congregation**

March 30, Sunday	10:00 a.m. - Worship (S) 11:00 a.m. - Fellowship 11:45-12:45 p.m. - Community Choir (SA)
March 31, Monday	3:00-4:30 p.m. - Girl Scouts (SA) 6:00-8:00 p.m. - Cub Scouts (SA)
April 1, Tuesday	5:15-6:15 p.m. - PiYo Class (SA)
April 2, Wednesday	6:00-8:00 p.m. - Boy Scouts (SA)
April 3, Thursday	5:15-6:15 p.m. - PiYo Class (SA) 4:00-9:00 p.m. Main Street Tavern Night 6:30-8:00 p.m. - Adult Choir Rehearsal (SA) 6:30-8:30 p.m. - Prayer Shawl (F)
April 4, Friday	Breakfast/Easter Egg Hunt Set Up (F/K/S/SS/SA)
April 5, Saturday	7:00-8:30 a.m. - AA (L) 9:00-2:00 p.m. - Breakfast/Easter Egg Hunt (F/K/S/SS/SA)
April 6, Sunday	10:00 a.m. - Worship (S) 11:00 a.m. - Fellowship (F) 11:30 a.m. - 1:30 p.m. Church Council (L) 11:45-12:45 p.m. - Community Choir (SA)

C - Sprague Chapel

F - Fellowship Hall

K - Kitchen

L - Library

P - Parking Lot

S - Sanctuary

SA - Sunday School Auditorium

SS - Sunday School Classroom

## Church News

**Fellowship Hosts Needed.** Fellowship hosts are needed on April 6 and April 27. If you are able to help out, please sign up in Fellowship Hall.

**Volunteers Needed for Card Writing Campaign.** A friend of Erin Wallace recently posted that her friend, who has no family, is struggling with a cancer diagnosis and is very sick. He's having a hard time and has no family to support him through this struggle. We are looking for people who would send him a card with prayers and/or encouragement. Cards and his address will be available in Fellowship Hall this Sunday. If you are willing and able, please pick up a card and mail a note of encouragement. You may also contact Erin directly at wallace3413@gmail.com. Thanks for letting your love shine!

**FCM Safety Team.** Here at First Church, safety is a top priority. It is even part of our statement of faith: "We will provide a safe haven - physically, emotionally, and spiritually - for all those whom God sends us." As such, the Church Council is developing a safety team, and we are seeking folks interested in serving on this team. The safety team hopes to connect with local safety organizations such as the police and fire department, take advantage of safety training that responds to changing times and new situations, and help develop best practices here at church. If you have a passion for the safety of others, please consider joining this new team, by contacting Cindy DeSellier, or another Church Council member, by the end of March. All are welcome to serve.

**Outreach Lenten Mission.** From March 1 to March 31, Outreach will be collecting hygiene items to be distributed by the Springfield Rescue Mission. Your donations will be distributed to residents in their Men's New Life Program, to guests at their Emergency Shelter and Giveaway Center, and to those they may meet through their

mobile feeding program. **New** items to fill totes: toothbrush and toothpaste; alcohol-free mouthwash; shampoo; conditioner; soap/body wash; deodorant; hand/body lotion; lip balm; body powder; nail clippers/file; disposable razor; shaving cream; feminine products; brush/comb; and rain poncho. There will be a box in Fellowship Hall and the Narthex to drop off your donations. Thank you for your help with this mission.

**One Great Hour of Sharing.** Our One Great Hour of Sharing offering will be on Sunday, March 30. When we participate in One Great Hour of Sharing, we shed light in places where circumstances make it difficult to imagine a future with hope. We will be taking donations over the next 3 weeks. Checks can be made payable to the First Church of Monson with OGHS 2025 in the memo line.

**Easter Egg Hunt and Pancake Breakfast.** On Saturday, April 5, First Church will be hosting an Easter egg hunt and pancake breakfast. The day will begin with a pancake breakfast at 9:00 a.m. The breakfast is \$10 for adults, \$5 for kids 5-17, and under 5 free. Please be sure to register for breakfast at [admin@monsontgether.com](mailto:admin@monsontgether.com). At 9:30 a.m. we will have story time, egg coloring, and arts & crafts. The Easter egg hunt will begin at 10:00 a.m. and will feature pictures with the Easter Bunny. Please help the homeless and families in need served by the Springfield Rescue Mission by bringing packages of NEW underwear, socks and t-shirts for men, women, and children.

# Welcome to First Church



**Welcome!** If this is your first or second Sunday with us, we are grateful that you've come to be with us this morning. It is our hope that you experience the love of Christ and God's presence during our worship. If you have any questions at all about where to go or what to do, our deacons, ushers, and church members are here to assist in making you feel right at home, so please do not hesitate to ask.

**All members and guests** are encouraged to wear name tags. Guests may obtain a temporary adhesive name tag from an usher.

**The Sacrament of Communion** is offered the first Sunday of the month. All are welcome to partake of the Lord's Supper. It is up to parents to decide whether their children are ready to receive this Sacrament.

**Handicapped parking** and a wheelchair ramp to the church and Fellowship Hall are on the High Street side of the building. Hearing assistive devices are available from the ushers.

**Fellowship Hour** begins after worship in Fellowship Hall (just follow the crowd). Please join us for refreshments and conversation.

**Our *Let's Eat* breakfast** is on the third Sunday of each month. Come enjoy a hearty breakfast from 8:00 a.m. to 9:30 a.m. before worship. Donations are gratefully accepted but not required.

**Learn more.** If you would like to learn more about First Church, please call us at (413) 267-3312, email to [office@firstchurchmonson.org](mailto:office@firstchurchmonson.org), or visit our website at <http://www.firstchurchmonson.org>.

*“Whoever you are, or wherever you are on life’s journey,  
**you** belong here!”*